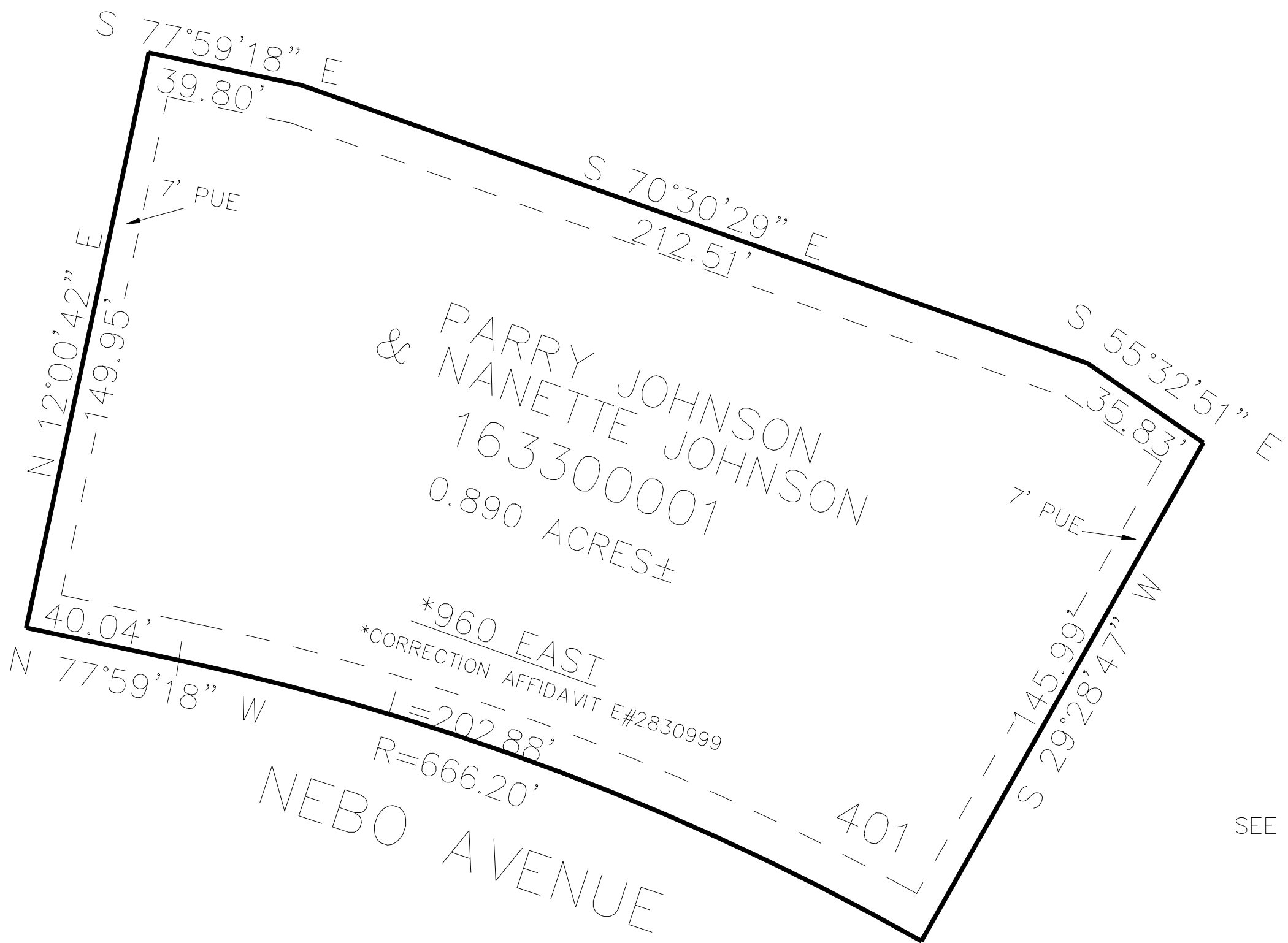


PART OF THE NE. 1/4, OF SECTION 21, T.7N., R.1W., S.L.B. & M.
NORTH OGDEN COVE 4TH AMENDMENT

330

TAXING UNIT: 433

IN NORTH OGDEN CITY
SCALE 1" = 30'



SEE PAGE 306

10' UTILITY & DRAINAGE EASEMENTS EACH
SIDE OF PROPERTY LINES AS INDICATED
BY DASHED LINES EXCEPT AS OTHERWISE
SHOWN.

FOR COMPLETE ENG DATA SEE
ORIGINAL DEDICATION PLAT IN
BOOK 80, PAGE 11 OF RECORDS.